

# Metso

MCP automaton is designed for simplified plant operation and equipment maintenance, with dedicated information by



# Case study

## Main features

### Advanced diagnostics:

- MCP monitors auxiliary low voltage motors for power consumption and advanced diagnostics, supporting maintenance and continuous improvement

### Continuous monitoring and automatic calibration:

- Continuously monitors lube and cooling system performance
- Automatically identifies issues and calibrates equipment
- Stabilizes consumption and component wear through load balancing cycles

### Advanced connectivity:

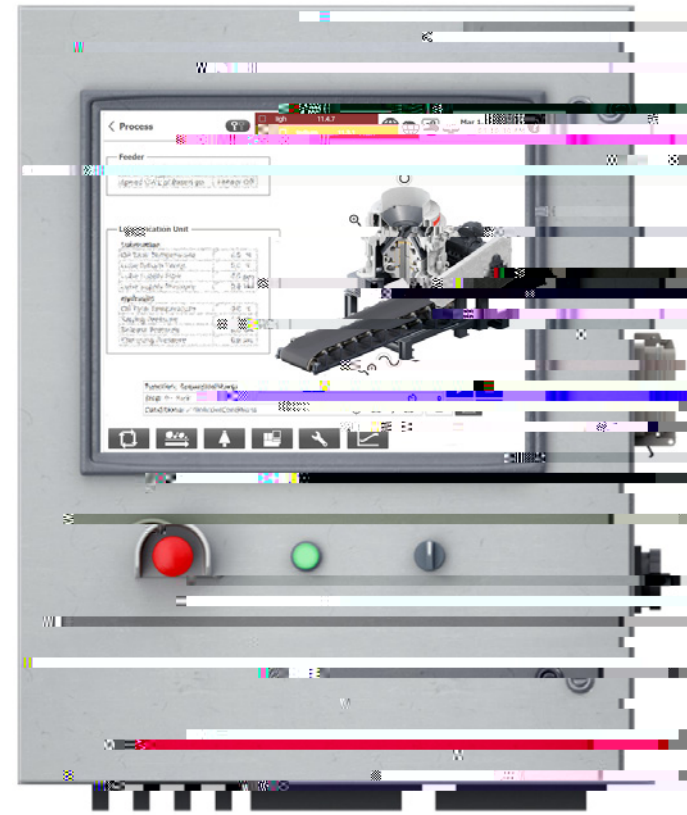
- Easily accesses information on all actions taken by operators and remote DCS connections
- Extracts data for continuous improvement and evaluation of operational performance

### Flexible and scalable:

- MCP's robust network adapts to site architecture and customer's wireless hardware specifications
- Provides simultaneous access to the machine locally and remotely
- Scalable for easy adoption into existing gateways with minimal additional investment

### Customizable alarm and warning setpoints:

- Tailor alarms for specific faults based on user groups
- Over 175 machine process control parameters
- 125 machine process warning and alarm setpoints



### Case study:

#### Case study:

- SmartStation for Superior™ MKIII primary gyratory crushers
- SmartCone for Nordberg® MP Series™ cone crushers

#### Case study:

- Advanced diagnostics
- Onboard process verification
- Machine local Wi-Fi control
- No code adjustments needed for Process Control Optimization
- Fully automatic operation